

# BIGGER. SHARPER. BOLDER.



INTRODUCING REALWEAR NAVIGATOR™ 520  
WITH HYPERDISPLAY

\*THAN REALWEAR NAVIGATOR 500

**RealWear Navigator™ 520** is the latest device in the RealWear Navigator™ 500 Series. Our new flagship wearable offers an upgraded display while maintaining the features of the RealWear Navigator 500 that you know and love, making it our best wearable yet.

## BUILT FOR PRODUCTIVITY. DESIGNED FOR SAFETY.

### Full-Shift, Hands-Free Use

Work comfortably all day with a full-shift battery. Keep your hands free and your vision unobstructed for maximum safety.

### Revolutionary Modular Design

Expand your functionality and tackle even more issues using accessories such as our Thermal Camera Module.

### Enhanced Remote Collaboration

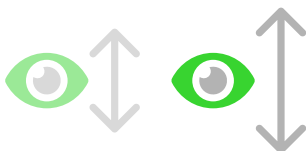
Harness the power of over 200 voice-optimized apps to improve productivity, save travel costs, and reduce equipment downtime.

### Secure and Seamless

Get your devices deployed easily and managed securely with the support of RealWear Cloud and MDMs such as Microsoft Intune.



## EXPERIENCE BETTER VIEWABILITY\*



### Longer Eye Relief

With longer eye relief, you can position the display farther from your eye to see the screen more easily.



### Larger Eye Box

With a larger eye box, you can more easily find the perfect viewing angle.



### Higher Resolution

Get sharper visuals and better color reproduction from a larger High Definition display.

\*Than RealWear Navigator 500

# SIDE-BY-SIDE COMPARISON

## COREDISPLAY

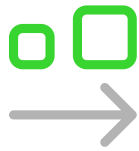
REALWEAR NAVIGATOR 500

## HYPERDISPLAY

REALWEAR NAVIGATOR 520

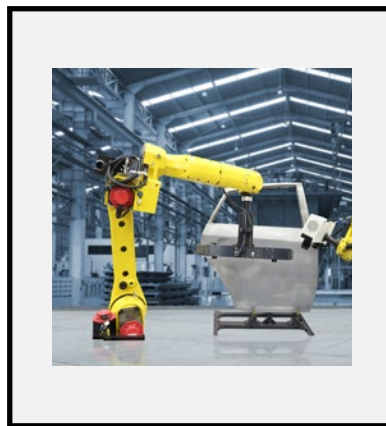
WVGA (854x480)	RESOLUTION	HD (1280x720)
20°	FIELD OF VIEW	24°
20mm	EYE RELIEF	30mm
8x5mm	EYE BOX	14x14mm
0.32"	DISPLAY SIZE	0.35"

## INTRODUCING THE HYPERDISPLAY



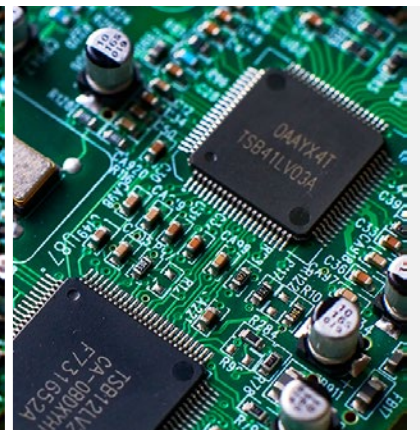
### Bigger

Experience a 20% larger screen\* while maintaining awareness for the best of both worlds.



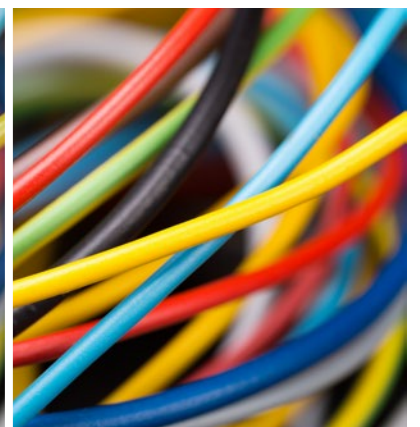
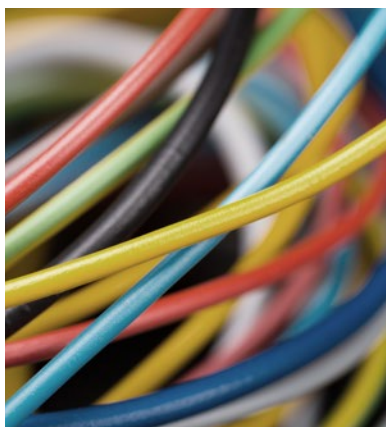
### Sharper

With twice the resolution\*, see text, graphics, and your environment in more detail.



### Bolder

HyperDisplay offers bolder, brighter, more accurate color representation\*.



\*Than RealWear Navigator 500

Comparison for illustrative purposes only. Actual experience may vary.

# TECHNICAL SPECIFICATIONS - REALWEAR NAVIGATOR 520

## GENERAL

Operating System	Android 11 (AOSP) + WearHF™ hands-free interface + Enterprise features
Chipset	2.0 GHz 8-core Qualcomm® Snapdragon™ 662 with Adreno 610 GPU - OpenGL® ES 3.2 & OpenCL™ 2.0
Memory	64GB internal storage / 4GB RAM / MicroSD slot (max card supported 512GB)
Weight	9.7oz/274g
Ruggedization	IP66, MIL-STD-810H, 6.5 feet / 2-meter drop
Dedicated Buttons	Power button (with integrated fingerprint sensor), Programmable: action button, left button, right button
Ports	1/8" / 3.5mm audio, 1 USB Type-C
Boom Arm	Adjusts six ways for most head sizes, left or right eye compatible, display can be moved out of way when not in use
Operating Temperature, Humidity	-4°F to +122°F / -20°C to +50°C, 5% to 95% relative humidity (non-condensing)
Included Applications	Document Navigator, Camera with Barcode Reader, Audio Recorder, Video Recorder, Webpage Viewer, Cloud Sync, Media Player, Calculator, Pedometer, Timer
Languages & Dialects Supported	Chinese (Cantonese, Mandarin-Simplified and Traditional), Czech, Dutch, English (American, Australian, British), French, German, Indonesian, Italian, Japanese, Korean, Polish, Portuguese, Russian, Spanish, Thai
Sign-in Options	Companion App, Voice Keyboard with secure mode

## CONNECTIVITY & SENSORS

Bluetooth	Bluetooth® 5.1
Wi-Fi	802.11 a/b/g/n/ac - 2.4 GHz and 5GHz
GPS and Location	<ul style="list-style-type: none"><li>• GPS, Glonass, BeiDou, Galileo, QZSS, and SBAS</li><li>• NavIC support</li><li>• Dual-Frequency GNSS (L1 + L5)</li><li>• Qualcomm® Sensor-Assisted Positioning</li></ul>
IMU - Head Movement Tracking	3 IMUs (including 3-axis accelerometers, gyroscopes, eCompass)

## BATTERY

Capacity	2,600 mAh / 10.0 Wh Li-polymer, rechargeable, hot-swappable
----------	---

## SECURITY

Security	Qualcomm® Trusted Execution Environment, Crypto Engine, Secure Boot
----------	---

## DISPLAY

Type	24° field-of-view, 24-bit color LCD, 0.35-inch diagonal, outdoor visible
Resolution	HD (1280X720)

## AUDIO

Microphone	4 digital microphones with active noise cancellation Accurate voice recognition in noise up to 100 dBA
Speaker	Internal 94 dBA loudspeaker

## CAMERA

Image	48 MP Sensor, PDAF with LED flashlight
Video	Up to 1080p @ 60fps, >6X zoom in HD, video stabilization. codecs: VP8, VP9, H.264, H.265 HEVC

## COMPATIBILITY

PPE	Works with many hard hats, protective eyewear, masks and more
-----	---

## WARRANTY

Warranty	1-Year Warranty
Extended Service & Support Plans	Available

## ACCESSORIES

Included	Workband, USB Type-C charging cable
----------	-------------------------------------

## CLOUD SERVICES

RealWear Cloud	Accelerates centralized deployment and management of devices
----------------	--



[realwear.com/navigator](https://realwear.com/navigator)